

# IA series

Low profile pushbutton switches for harsh environments • bushing Ø 16 mm • momentary



## DISTINCTIVE FEATURES

Resistant to frost, sand and hydrocarbons

Tactile feedback

Front panel sealed to IP65 and IP67



## ENVIRONMENTAL SPECIFICATIONS

- Front panel sealing :  
IP65 and IP67 acc. to IEC 60529
- Salt spray : IEC 512-6, test 11f
- Operating temperature : -20 °C to +65 °C (-4 °F to +149 °F)



## ELECTRICAL SPECIFICATIONS

- Max. current/voltage rating with resistive load : 2 A 24 VDC
- Initial contact resistance : 100 mΩ max.
- Insulation resistance : 100 MΩ min. at 500 VDC
- Dielectric strength : 500 Vrms
- Electrical life at full load : 1,000,000 cycles



## GENERAL SPECIFICATIONS

- Panel thickness : 7 mm (.276) max.
- Total travel : 1.5 mm (.059) ± 0.3 mm
- Typical operating force : 7 N ± 2 N
- Low level or mechanical life : 1,000,000 cycles
- Torque : 0.5 to 1 Nm max. applied to nut



## MATERIALS

- Case/bushing : thermoplastic
- Actuator : polyurethane
- Contacts : silver, gold plated
- Multi-wire leads AWG20, section 0.6 mm<sup>2</sup>.
- Terminal seal : epoxy

The company reserves the right to change specifications without notice.



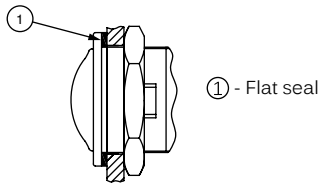
# IA series

Low profile pushbutton switches for harsh environments • bushing Ø 16 mm • momentary



## PANEL MOUNTING

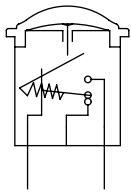
- Panel cut-out Ø 16.2 mm (.657)
- Min. pitch for matrix mounting :
  - with standard hex nut : 27 x 27 mm (1.062 x 1.062)
  - with knurled nut U3327: 20 x 20 mm (.787x.787)



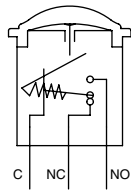
① - Flat seal



## ELECTRICAL FUNCTIONS



Function 3 (NO)



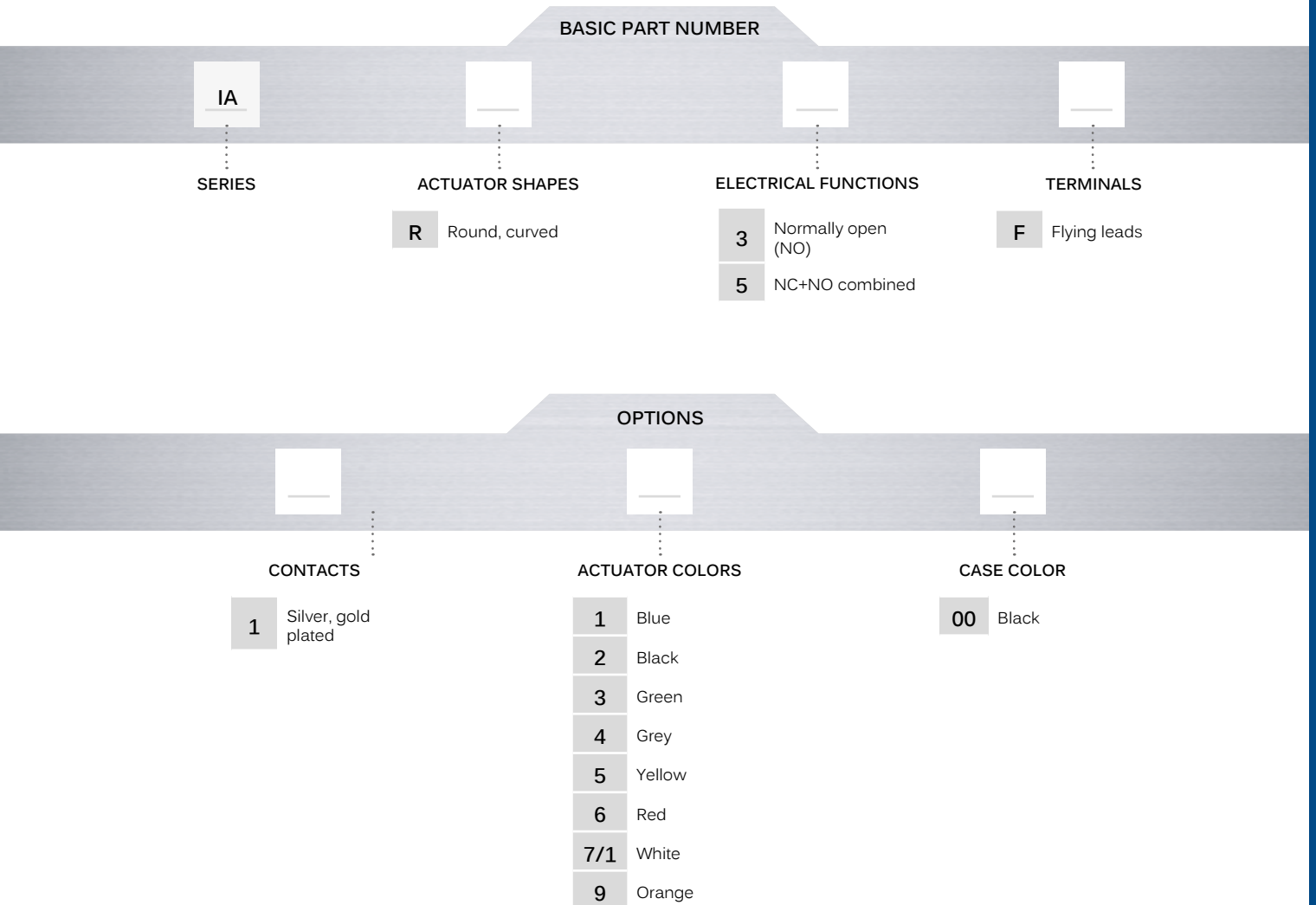
Function 5 (NC+NO)

# IA series

Low profile pushbutton switches for harsh environments • bushing Ø 16 mm • momentary



## BUILD YOUR PART NUMBER



## ABOUT THIS SERIES

On the following pages, you will find successively basic part numbers of switches and options in the same order as in above chart.

- A sealing boot** is available to protect the switches against frost and sand. See "Sealing Boots" section of website.
- Mounting accessories** : Standard hardware supplied : 1 hex nut 19 mm (.748) across flats and 1 flat seal. Knurled nut U3327 available on request.



**ERMEC, S.L. BARCELONA**  
C/ Francesc Teixido, 22  
08918 Badalona SPAIN

Tel. +34 902 450 160  
info@ermec.com  
www.ermec.com

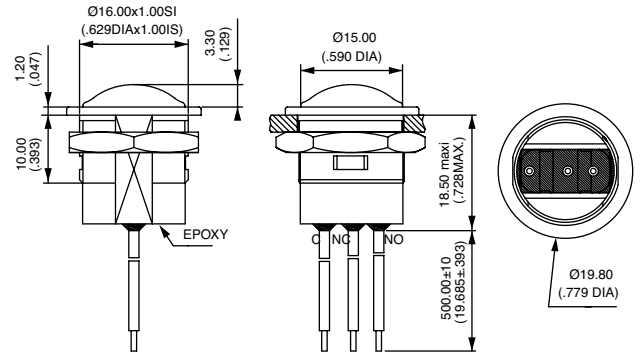
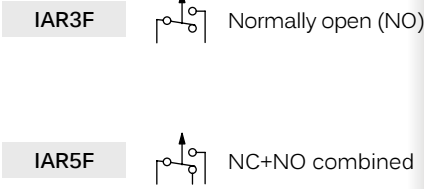
**ERMEC, S.L. - MADRID**  
C/ Puerto Rico, 4  
28222 Majadahonda (Madrid) SPAIN

bilbao@ermec.com  
portugal@ermec.com

# IA series

Low profile pushbutton switches for harsh environments • bushing Ø 16 mm • momentary

## MODELS



Wire colors (NC+NO) : black = common, brown = NC, blue = NO  
NO model has 2 terminals only.

### CONTACT MATERIAL



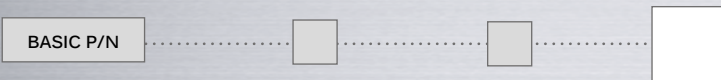
- 1 Silver, gold plated

### ACTUATOR COLORS



- 1 Blue
- 2 Black
- 3 Green
- 4 Grey
- 5 Yellow
- 6 Red
- 7/1 White
- 9 Orange

### CASE COLORS



- 00 Black